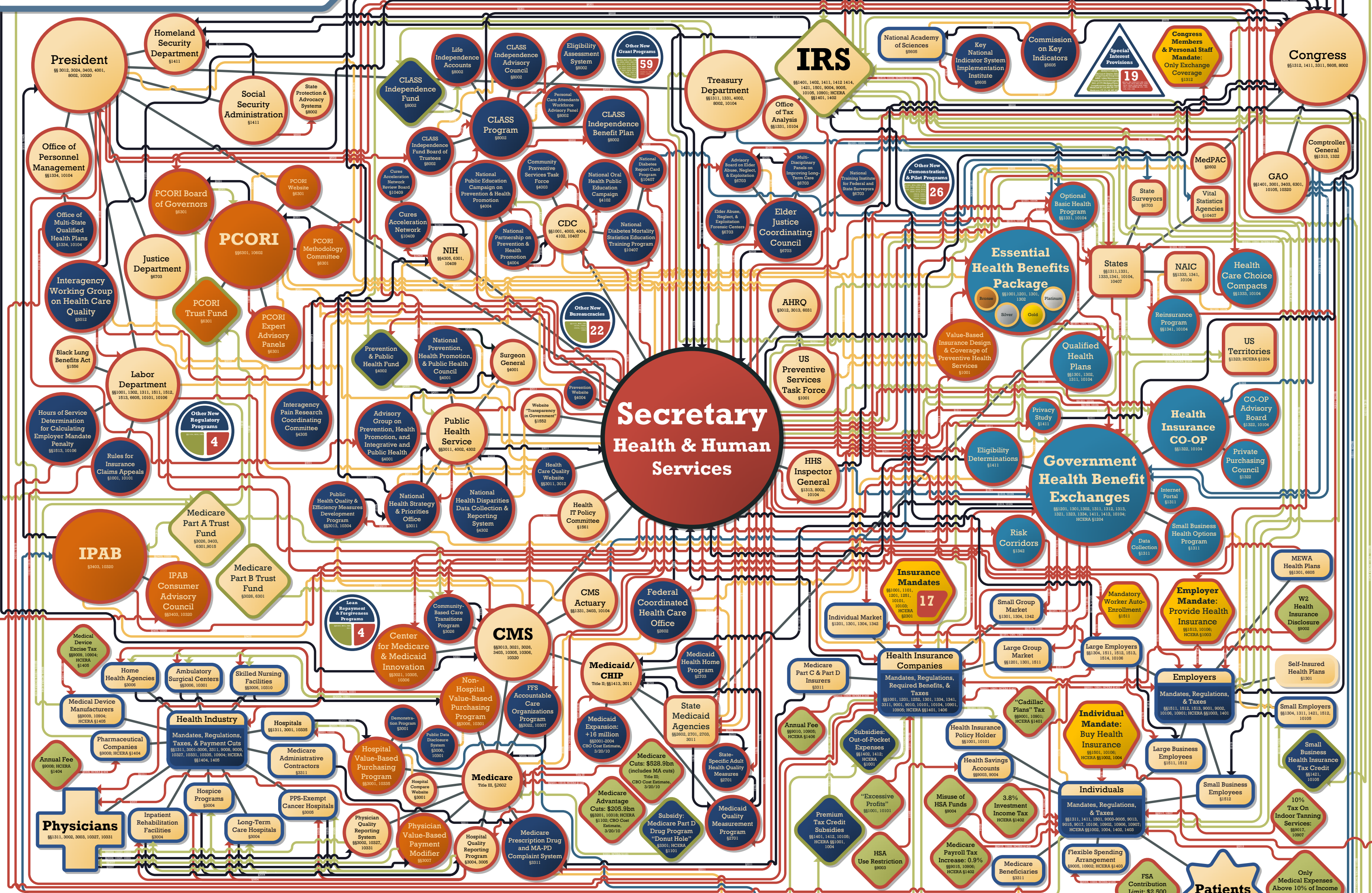


# Your New Health Care System



### New Government

- Rationing Potential
- Involvement in Health Insurance Market
- Other Expansions
- Represents Bundles of Additional Entities
- Mandates
- Taxes & Monetary Fees/Penalties/Cuts
- Trust Fund (Rationing Potential)
- Other New Trust Funds/Monetary Benefits

### Expanded Government

- Government with Expanded Authority/Responsibility
- Government Financial Entity with New Inflows/Outflows
- State/Territory with Expanded Authority/Responsibility

### Private

- Private Entity with New Mandates/Regulations/Responsibilities
- Unchanged Private Entity
- Special Interest Provisions

### New Relationships

- Regulations/Requirements/Mandates
- Reporting Requirements
- Oversight
- Money Flows
- Consultation/Advisory/Info Sharing
- Structural Connections (Includes Existing)

AGI: Adjusted Gross Income  
 AHRQ: Agency for Healthcare Research and Quality  
 CDC: Centers for Disease Control and Prevention  
 CHIP: Children's Health Insurance Program  
 CLASS: Community Living Assistance Services & Supports  
 CMS: Centers for Medicare & Medicaid Services  
 CO-OP: Consumer Operated & Oriented Program  
 FFS: Fee-for-Service  
 FSA: Flexible Spending Arrangement  
 GAO: Government Accountability Office  
 HCERA: Health Care & Education Reconciliation Act  
 HHS: Health & Human Services Department  
 HSA: Health Savings Account  
 IPAB: Independent Payment Advisory Board  
 IRS: Internal Revenue Service  
 MA-PD: Medicare Advantage Prescription Drug  
 MedPAC: Medicare Payment Advisory Commission  
 MERD: Medical Early Risk Detection  
 EALORS: Executive Auxiliary Linked Office Regional Systems  
 MEWA: Multiple Employer Welfare Arrangement  
 NAIC: National Association of Insurance Commissioners  
 NIH: National Institutes of Health  
 PCORI: Patient-Centered Outcomes Research Institute  
 PPS: Prospective Payment System

**Patient Protection & Affordable Care Act, P.L. 111-148;**  
**Health Care & Education Reconciliation Act, P.L. 111-152**  
 Prepared by: Joint Economic Committee, Republican Staff  
 Congressman Kevin Brady, Senior House Republican  
 Senator Sam Brownback, Ranking Member